



**SECURITY WITH VISIBILITY**





# ELEGANCE IN MERCHANDISING



- 3 PROTECT** your assets and optimize space
- 2 SHIELD** your products while providing visibility
- 1 SECURE** your retail premises 24/7



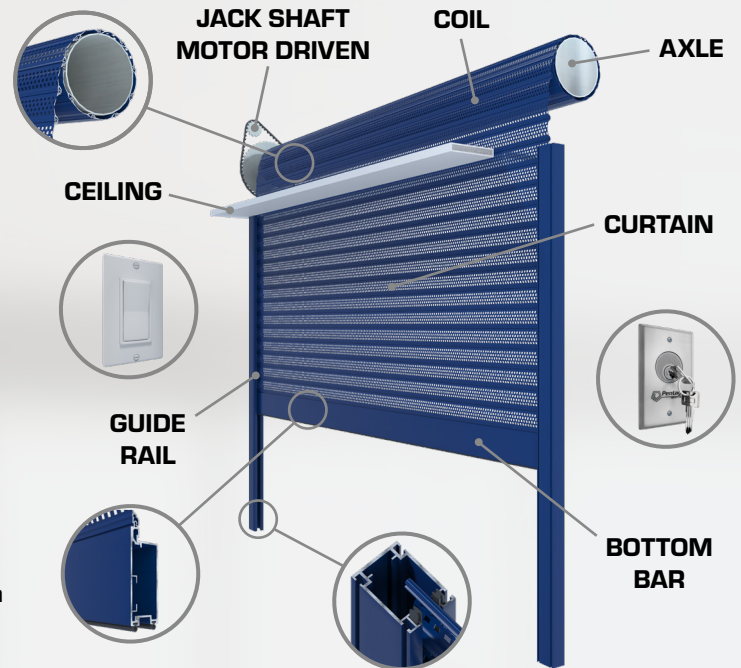
# RETAIL SECURITY CLOSURES

## OPERATION

- Control effortlessly by paddle switch or key switch
- Commercial-grade construction, requires little maintenance
- Curtain stores in a compact coil, saving valuable space
- Engineered and tested to meet and exceed industry standards
- Operation by Jack Shaft Motor (customer supplied or included)
- Emergency egress option available

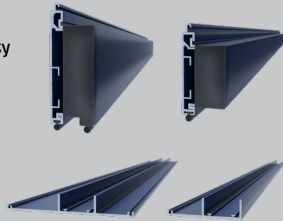
## MATERIALS

- Provides excellent visibility, air flow and security
- Offers a clean, uncluttered view that helps promote your business even when closed
- Commercial grade aluminum - Environmentally friendly material with positive effects during production and operation
- Adds beauty to the interior and exterior of a building or storefront, with many different design configurations



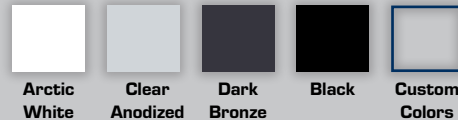
## BOTTOM BAR OPTIONS

- 75mm (3 in) or 100mm (4 in) Heavy Duty Bottom Bar
- 75mm (3 in) or 150mm (6 in) Bottom Plates available
- Bottom Bar Plates are used to cover the ceiling opening when the curtain is completely open



## FRAME & CURTAIN COLOR OPTIONS

- Choice of six standard colors, or match your custom color
- Next generation powder coat finishes with optimum durability



## SMALL PERFORATION



## LARGE PERFORATION



## CLEAR CURTAIN



## BRICK PATTERN



## STRAIGHT PATTERN



## WINDOW OPENING



## SHUTTER CURTAIN STYLES AND SIZING

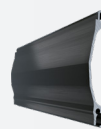
Pentagon EntrexGuard curtain styles are finished in industry leading coatings, and provide options for visibility. Our engineered slats provide enhanced security as well as adding to the visual appeal of your facility.



530  
Series



535  
Series



560  
Series



561  
Series



562  
Series

### SOLID CURTAIN

Description	560
The solid curtain provides a highly secure barrier and is available in just the 560 series for the EntrexGuard retail security shutter system. It provides the optimum security, however it does not allow for any light transfer or air flow. The solid curtain is very strong and durable allowing it to stand up against vandalism and intruders, however it also looks amazing due to the smooth and sleek design of the curtain.	Single wall extruded aluminum

### PERFORATED CURTAIN

Description	561	562
The perforated curtain is available in both the 561 and the 562 series. The perforated curtain allows light transfer through the shutter curtain as well as optimal air flow. The small perforations options is designed to provide an unobstructed view through the the shutter. The large perforations option gives you the look of a 'link and rod' grille door, with the advantage of having minimal moving parts.	Single wall extruded aluminum with small perforations	Single wall extruded aluminum with large perforations

### PATTERNED CURTAIN

Description	530	535
The patterned curtain is available using the 530 and 535 series in EntrexGuard. Clear anodized connector rods are used in between each slat. The curtain patterns we offer include clear, brick, straight, and window.	Clear polycarbonate /aluminum with curved design	Clear polycarbonate /aluminum with straight design

### BOTTOM BAR SIZING

Description	HD Bottom Bar	Bottom Bar Plates
The EntrexGuard system is compatible with the Heavy Duty Bottom Bar (two sizes). When used on the EntrexGuard system, these bottom bars are compatible with our bottom bar plates to cover the ceiling opening.	3 in (75mm) 4 in (100mm)	3 in (75mm) 6 in (150mm)

### GUIDE RAIL SIZING

Description	64mm	83mm	83mm - AnchorLoc
There are two sizes of guide rails compatible with the EntrexGuard system. AnchorLoc provides the ultimate strength and stability, with end retention securing the curtain to each guide rail.	2.5 in (64mm)	3.25 in (83mm)	3.25 in (83mm)

### SHUTTER AND CURTAIN SIZING

Slat Profiles	Guide Rail Sizes	Bottom Bar Sizes	Maximum Curtain Size	Maximum Curtain Area
500, 530, 535, 540, 560, 561, 562	2.5 in (64mm), 3.25 in (83mm), 3.25 in (83mm) with AnchorLoc	Heavy Duty - 3 in (75mm), Heavy Duty - 4 in (100mm)	Width: Up to 300 in (7620mm) Height: Up to 228 in (5791mm)	250 sq. ft (23 sq. m)